

# Eaton 9PX UPS

5 - 11 kVA



Rack/Tower versatile



9PX 11kVA with Maintenance ByPass

## Advanced protection for:

- Small & medium datacenter
- IT, Networking, Storage and Telecom
- Infrastructure, Industrial and Medical



## Energy efficient power protection

### Performance and Efficiency

- Double conversion topology. The Eaton 9PX constantly monitors power conditions and regulates voltage and frequency.
- With up to 95% efficiency in online double conversion mode and 98% in high-efficiency mode the 9PX provides the highest efficiency level in its class to reduce energy & cooling costs.
- With a 0.9 power factor the 9PX delivers 28% more power than UPS in its class. It powers more servers than other UPSs with equivalent VA ratings and lower power factors.
- With a RT (Rack/tower) versatile form factor the 9PX is the most compact solution in its class delivering up to 5400W in only 3U and 10kW in only 6U.

### Manageability

- The new graphical LCD provides clear information on the UPS's status and measurements on a single screen (in seven languages). LCD display position can be adjusted to offer the best viewable angle for tower and rack usage.
- The 9PX can meter energy consumption. kWh values can be monitored using the LCD or Eaton's Intelligent Power® Software Suite.
- Load segment control enables prioritised shutdowns of nonessential equipment to maximise battery runtime for critical devices. It can also be used to remotely reboot locked-up network equipment or to manage scheduled shut-downs and sequential start-ups.
- The 9PX offers Serial, USB and relay connectivity, plus an extra slot for an optional card. Eaton's Intelligent Power® Software Suite compatible with all major OS including virtualization software such as VMware and Hyper-V is included with each UPS.

### Availability and Flexibility

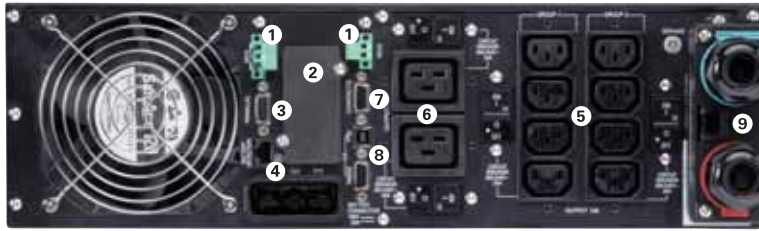
- The internal bypass allows service continuity in case of internal fault, a Maintenance ByPass is also available for easy replacement of the UPS without powering down critical systems.
- The Eaton 9PX can be paralleled to achieve twice the power of unitary product using HotSync technology, without extra cost on the initial purchase (available in Q2 2013)
- Stronger, longer battery life: Eaton ABM® battery management technology uses an innovative three-stage charging technique that extends battery life by up to 50%.
- More runtime can be added with up to 12 external hot-swappable battery modules, able to run systems for hours if necessary. The additional battery modules are automatically recognized by the UPS.

# EATON

Powering Business Worldwide

# Eaton 9PX UPS

- 1 Remote Off/On and Remote Power Off connectors
- 2 Slot for Network-MS, ModBus-MS or Relay-MS cards
- 3 Parallel operation port (DB15)
- 4 External battery module (EBM) connector with automatic detection (RJ11)



Eaton 9PX 6kVA

- 5 8 IEC 10A sockets (2 groups of 4 manageable sockets) with cable retention system
- 6 2 IEC 16A sockets with cable retention system
- 7 DB 9 with output contacts
- 8 USB and serial ports
- 9 Input/Output connection

Technical Specifications	5kVA	6kVA	8kVA	11kVA
Rating (kVA/kW)	5kVA/4.5kW	6kVA/5.4kW	8kVA/7.2kW	11kVA/10kW
<b>Electrical Characteristics</b>				
Technology	On-line double conversion with Power Factor Correction (PFC) system			
Nominal voltage	200/208/220/230/240V		200/208/220/230/240V/250V	
Input voltage range	176-276V without derating (up to 100-276V with derating)			
Output voltage/THDU	200/208/220/230/240V +/- 1%; THDU <2%		200/208/220/230/240/250V +/- 1%; THDU <2%	
Input frequency range/THDI	40-70Hz, 50/60Hz autoselection, frequency converter as standard, THDI < 5%			
Efficiency	Up to 94% in Online mode, 98% in Hi-Efficiency mode		Up to 95% in Online mode, 98% in Hi-Efficiency mode	
Crest factor/short circuit current	3:1/90A	3:1/90A	3:1/120A	3:1/150A
Overload capacity	102-110% : 120s, 110-125%: 60s, 125-150%: 10s, >150%: 500ms		102-110% : 120s, 110-125%: 60s, 125-150%: 10s, >150%: 900ms	
<b>Connections</b>				
Input	Terminal block (up to 10 mm <sup>2</sup> )		Terminal block (up to 16mm <sup>2</sup> )	
Outputs	Terminal block + 2 controlled groups of 4 IEC C13 (10A) + 2 IEC C19 (16A)		Terminal block	
Outputs with HotSwap Maintenance Bypass	Terminal block + 3 IEC C13 (10A) + 2 IEC C19 (16A)		Terminal block + 4 IEC C19 (16A)	
<b>Batteries</b>				
Typical backup times at 50 and 70% load*				
9PX	13/10 min	11/8 min	20/15 min	13/9min
9PX + 1 EBM	60/40 min	48/34 min	48/32 min	32/21 min
9PX + 4 EBM	220/150 min	170/120 min	140/100 min	100/70 min
Battery management	ABM® and Temperature compensated charging method (user selectable), automatic battery test, deep discharge protection, automatic recognition of external battery units.			
<b>Communication</b>				
Communication ports	1 USB port, 1 RS232 serial port (USB and RS232 ports cannot be used simultaneously), 4 dry contacts (DB9), 1 mini terminal block for remote On/Off and 1 for remote power Off, 1 DB15 for parallel operation.			
Communication slot	1 slot for Network-MS card, ModBus-MS or Relay-MS cards.			
<b>Operating conditions, standards and approvals</b>				
Operating temperature	0 to 40°C continuous			
Noise level	<45dB	<45dB	<48db	<50db
Safety	IEC/EN 62040-1, UL 1778, CSA 22.2			
EMC, performance	IEC/EN 62040 -2 , FCC Class A, IEC/EN 62040-3 (Performance)			
Approvals	CE, CB report (TUV), UL			
<b>Dimensions H x W x D/Weight</b>				
UPS	440(19'')*130(3U)*685mm/48kg	440(19'')*130(3U)*685mm/48kg	440(19'')*260(6U)*700mm/84kg	440(19'')*260(6U)*700mm/86kg
EBM	440(19'')*130(3U)*645mm/68kg	440(19'')*130(3U)*645mm/68kg	440(19'')*130(3U)*680mm/65kg	440(19'')*130(3U)*680mm/65kg
Power module	-	-	440(19'')*130(3U)*700mm/19kg	440(19'')*130(3U)*700mm/21kg
<b>Customer Service and Support</b>				
Warranty	3 years on electronics, 2 years on battery		2 years on electronics and battery	
* Runtimes are shown at 0.7 power factor. Backup times are approximate and may vary with equipment, configuration, battery age, temperature, etc				
<b>Parts Numbers</b>				
UPS with Rack Kit	9PX5KiRT	9PX6KiRT	9PX8KiRT	9PX11KiRT
EBM with Rack Kit	9PXEBM180RT	9PXEBM180RT	9PXEBM240RT	9PXEBM240RT
Power Module	-	-	9PX8KiPM	9PX11KiPM
Network Management Card	Network-MS	Network-MS	Network-MS	Network-MS
HotSwap Maintenance Bypass	MBP6Ki	MBP6Ki	MBP11Ki	MBP11Ki
Transformer Module	TFMR11Ki	TFMR11Ki	TFMR11Ki	TFMR11Ki
Supercharger with Rack Kit	-	-	SC240RT	SC240RT
1.8m Battery Connection Cable	EBMCBL180	EBMCBL180	EBMCBL240	EBMCBL240
Battery Integration System	BINTSYS	BINTSYS	BINTSYS	BINTSYS
Rack Kit	9RK	9RK	9RK	9RK

